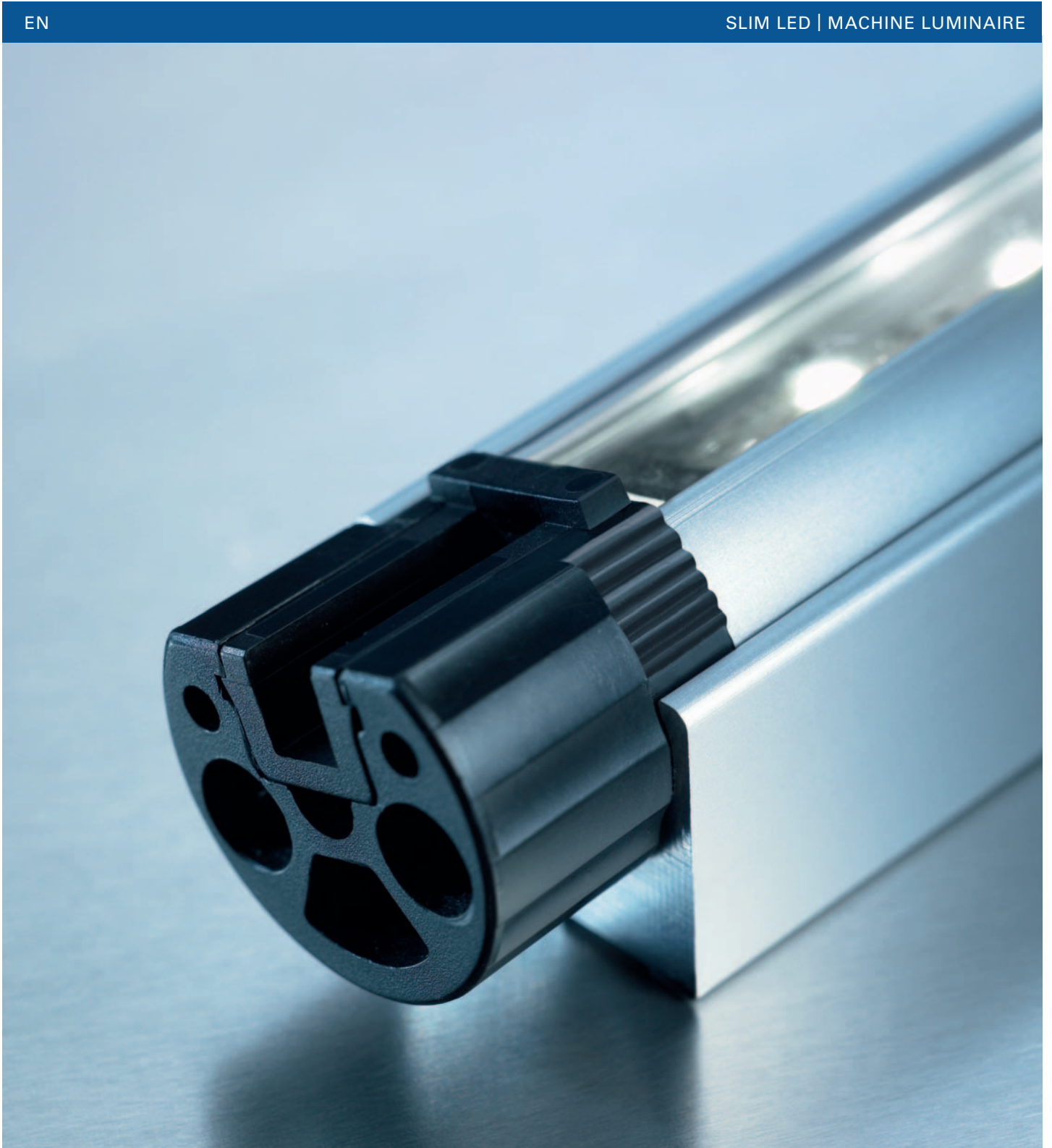


**Waldmann** **W**  
ENGINEER OF LIGHT.

EN

SLIM LED | MACHINE LUMINAIRE





## SLIM LED. FLOOD LIGHTING MADE TO MEASURE.

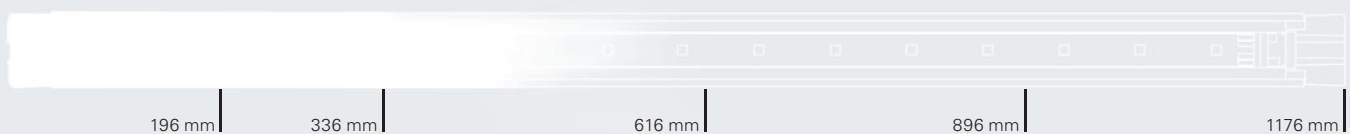
The SLIM LED is the lighting solution for machines and equipment with space-constraints and limited installation space.

The sleek profile of the luminaire is not one millimeter higher and wider than necessary. The luminous power, in contrast, is tremendous. SLIM LED luminaires are equipped with the latest LED technology. This allows large-scale and powerful illumination of machine workplaces. In addition, the light emission direction can be individually adjusted.

Speaking of individuality: SLIM LED luminaires are available in lengths ranging from 196 to 1176 mm – flood lighting made to measure. This creates flexible usage options in a wide variety of applications, with protection class IP 67, such as:

Machine tools (magazine tools, feeding), sheet metal working (bending, edging, stamping, cutting), saws, printing machines, packaging machines, textile machines, automation technology, image processing, etc.

The high-tech aluminum profile effectively protects the LEDs from damage by mechanical influences. Without additional operating devices, the luminaire is directly connected to 24 volt direct current.





## 50,000 HOURS OF LIGHTING EFFICIENCY.

Optimum light is ensured by the latest LED technology – LINEAR-light POWER Flex. The special feature is that the LEDs are attached to a flexible circuit board. The luminaire can be varied in length in increments of 140 mm.

The LEDs have a minimum service life of 50,000 operating hours. This means: 6 years of continuous light without replacing lamps, minimal maintenance costs, and high energy cost savings, as the LED is by far more efficient than an incandescent lamp with comparable luminosity.

A system comparison shows: A 60 watt incandescent lamp provides 11 lumen per watt. LED OSRAM LINEAR-light puts out 50 lumen per watt, which is approximately 5 times more luminous intensity. For this reason, the use of LED technology is also an active contribution to lower energy consumption and electricity costs.



## TOUGH AND RUGGED.

The SLIM LED was created for use under extreme conditions.

Thanks to a high-tech potting compound consisting of premium adhesive resin, the luminaire is absolutely water and dust-tight according to IP 67.

The potting compound is directly applied at Waldmann. For this purpose, a proprietary manufacturing system was developed and implemented in the production operation of Waldmann.

In LED technology, the light is produced electronically and not via a glow wire as in conventional lamps. As it requires no glow wire, there is also no risk of breakage due to mechanical strain. SLIM LED luminaires are therefore also absolutely unsusceptible to vibrations and impact.

The profile developed by Waldmann specifically for the SLIM LED is made of anodized and therefore indestructible aluminum. The cable is made of durable polyurethane.

The sleek and flat profile allows the SLIM LED to provide optimal light in areas where previously no room existed for the installation of a luminaire.

The SLIM LED is a luminaire that withstands extreme conditions. It's a product made by professionals for professionals.



## THE RIGHT SETTING FOR ANY APPLICATION.



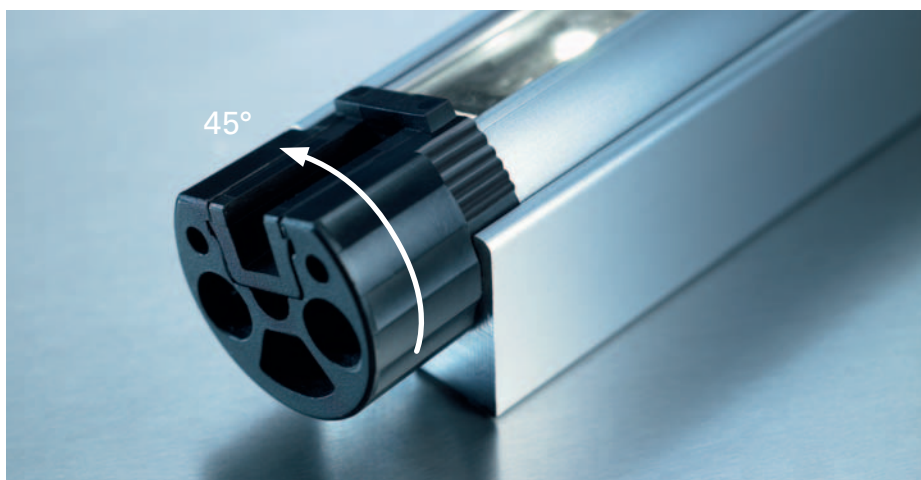
The base version is typically always cast with a high-tech potting compound and is water and dust-tight in accordance with protection class IP 67.



**Variant 1** additionally contains a clear acrylic screen to offer protection from coarse mechanical influences – such as metal chips.



**Variant 2** is equipped with a brushed acrylic screen. This produces a broadly scattered, diffuse light and prevents glare from reflections.



Another feature option allows the continuously variable adjustment of the lighting direction at an angle of  $\pm 45^\circ$ .

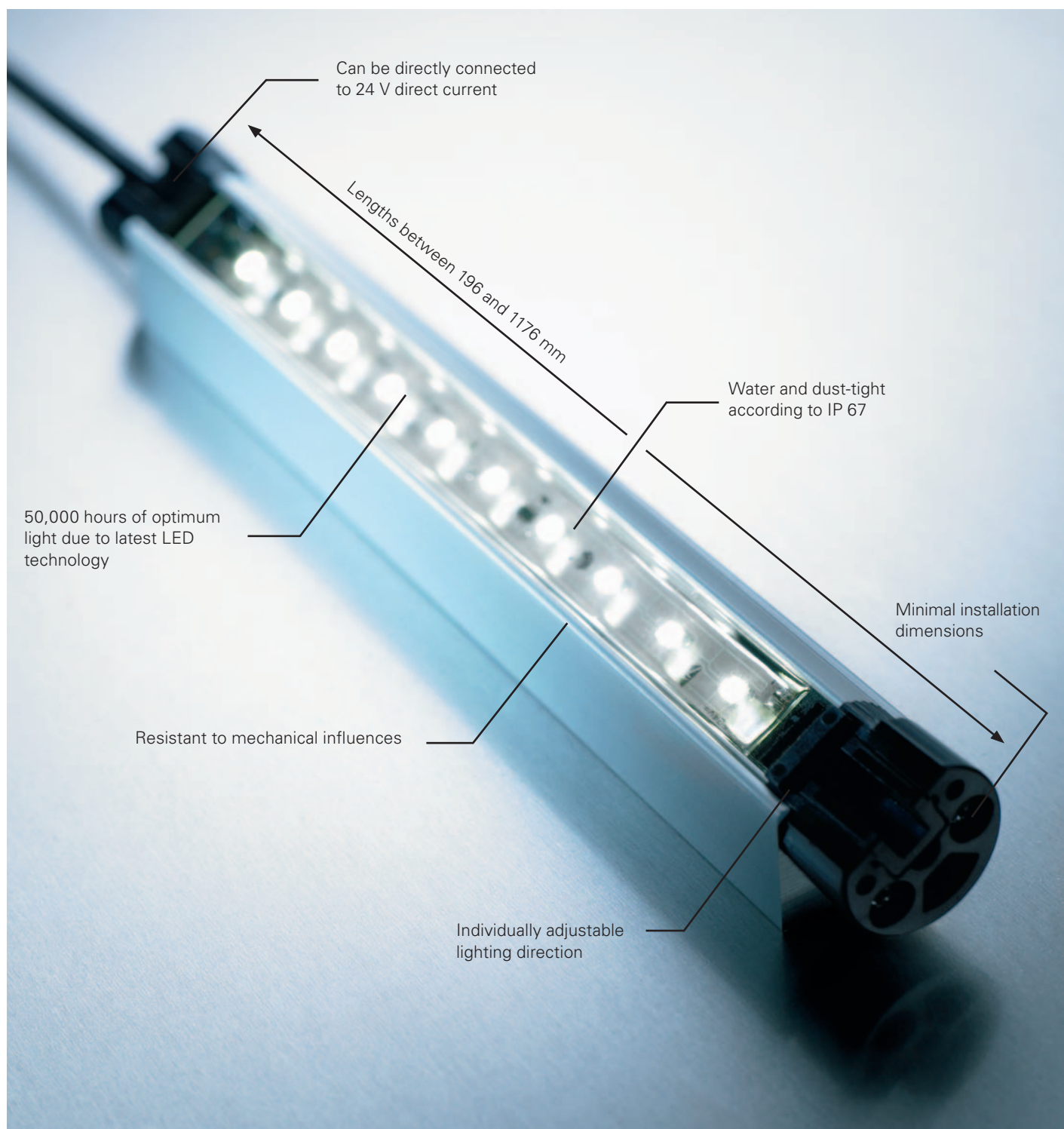
The assembly too is done in no time at all – regardless of the variant: The base version is attached to the machine wall by way of two metal tabs. On the rotatable variant, a carrier profile is first installed and the rotating module is then simply snapped into the profile.

The SLIM LED offers extremely flexible use in a variety of applications. It is directly connected to 24 volt direct current. The integrated circuit board matches the connecting voltage optimally to the LED and automatically compensates for voltage fluctuations of  $\pm 1$  volt.

An additional operating device or transformer is not required. As a result, the procurement cost, installation time, and maintenance cost are minimized.

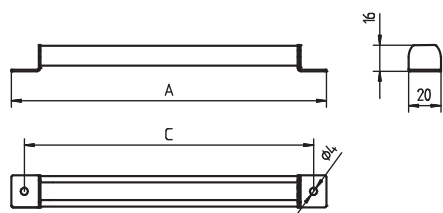


## SLIM LED – THE SPECIAL FEATURES AT A GLANCE.



## SLIM LED

## TECHNICAL DATA



Connected load	24 V (DC) +/- 1 Volt
Housing	Anodized aluminum
Connecting line	approx. 3.0 m
Angle of reflected beam	wide-spread
Lamp cover	Base version: potted Variant 1: clear screen Variant 2: brushed screen
Material of side part	rigid metal adjustable polyamide
Protection rating	III
Protection class	IP 67

ITEM NO.	DESCRIPTION	TOTAL LENGTH A	OUTPUT	TECHNOLOGY	SCREEN
112 544 000	LIQ 6	196 mm	3.6 watt	adjustable	clear
112 544 005	LIQ 6	196 mm	3.6 watt	adjustable	brushed
112 544 010	LIQ 6	196 mm	3.6 watt	adjustable	
112 545 000	LIQ 6	196 mm	3.6 watt	rigid	clear
112 545 005	LIQ 6	196 mm	3.6 watt	rigid	brushed
112 545 010	LIQ 6	196 mm	3.6 watt	rigid	
112 544 001	LIQ 12	336 mm	7.2 watt	adjustable	clear
112 544 006	LIQ 12	336 mm	7.2 watt	adjustable	brushed
112 544 011	LIQ 12	336 mm	7.2 watt	adjustable	
112 545 001	LIQ 12	336 mm	7.2 watt	rigid	clear
112 545 006	LIQ 12	336 mm	7.2 watt	rigid	brushed
112 545 011	LIQ 12	336 mm	7.2 watt	rigid	
112 544 002	LIQ 24	616 mm	14.4 watt	adjustable	clear
112 544 007	LIQ 24	616 mm	14.4 watt	adjustable	brushed
112 544 012	LIQ 24	616 mm	14.4 watt	adjustable	
112 545 002	LIQ 24	616 mm	14.4 watt	rigid	clear
112 545 007	LIQ 24	616 mm	14.4 watt	rigid	brushed
112 545 012	LIQ 24	616 mm	14.4 watt	rigid	
112 544 003	LIQ 36	896 mm	21.6 watt	adjustable	clear
112 544 008	LIQ 36	896 mm	21.6 watt	adjustable	brushed
112 544 013	LIQ 36	896 mm	21.6 watt	adjustable	
112 545 003	LIQ 36	896 mm	21.6 watt	rigid	clear
112 545 008	LIQ 36	896 mm	21.6 watt	rigid	brushed
112 545 013	LIQ 36	896 mm	21.6 watt	rigid	
112 544 004	LIQ 48	1176 mm	28.8 watt	adjustable	clear
112 544 009	LIQ 48	1176 mm	28.8 watt	adjustable	brushed
112 544 014	LIQ 48	1176 mm	28.8 watt	adjustable	
112 545 004	LIQ 48	1176 mm	28.8 watt	rigid	clear
112 545 009	LIQ 48	1176 mm	28.8 watt	rigid	brushed
112 545 014	LIQ 48	1176 mm	28.8 watt	rigid	

## ACCESSORIES



Operating device for LED machine luminaires

Item no.	209 585 029
Connected load	120-240 V, 50/60 Hz
Output voltage	24 volt (DC)
Power	20 Watt
Assembly	Clip for top-hat DIN rail

**HEADQUARTERS GERMANY**

Herbert Waldmann GmbH & Co. KG  
Postfach 50 62  
78057 VILLINGEN-SCHWENNINGEN  
GERMANY  
Telephone +49 7720 601-100  
Fax +49 7720 601-290  
www.waldmann.com  
info@waldmann.com

**FRANCE**

Waldmann Eclairage S.A.S.  
Zone Industrielle  
Rue de l'Embranchement  
67116 REICHSTETT  
FRANCE  
Telephone +33 3 88 20 95 88  
Fax +33 3 88 20 95 68  
www.waldmann.com  
info-fr@waldmann.com

**ITALY**

Waldmann Illuminotecnica S.r.l.  
Via della Pace, 18 A  
20098 SAN GIULIANO MILANESE (MI)  
ITALY  
Telephone +39 02 98 24 90 24  
Fax +39 02 98 24 63 78  
www.waldmann.com  
info-it@waldmann.com

**THE NETHERLANDS**

Waldmann B.V.  
Lingewei 19  
4004 LK TIEL  
THE NETHERLANDS  
Telephone +31 344 631019  
Fax +31 344 627856  
www.waldmann.com  
info-nl@waldmann.com

**AUSTRIA**

Waldmann Lichttechnik Ges.m.b.H.  
Gewerbepark Wagram 7  
4061 PASCHING/LINZ  
AUSTRIA  
Telephone +43 7229 67400  
Fax +43 7229 67444  
www.waldmann.com  
info-at@waldmann.com

**SWEDEN**

Waldmann Ljusteknik AB  
Skebokvarnsvägen 370  
124 50 BANDHAGEN  
SWEDEN  
Telephone +46 8 990 350  
Fax +46 8 991 609  
www.waldmann.se  
hk@waldmann.se

**SWITZERLAND**

Waldmann Lichttechnik GmbH  
Benkenstrasse 57  
5024 KÜTTIGEN  
SWITZERLAND  
Telephone +41 62 839 1212  
Fax +41 62 839 1299  
www.waldmann.com  
info-ch@waldmann.com

**UK**

Waldmann Lighting Ltd.  
Holme Well Road  
Middleton  
LEEDS LS 10 4TQ  
WEST YORKSHIRE  
UK  
Telephone +44 113 2775662  
Fax +44 113 2775775  
www.waldmann.com  
enquiries@waldmannlighting.co.uk

**USA**

Waldmann Lighting Company  
9, W. Century Drive  
WHEELING, ILLINOIS 60090  
USA  
Telephone +1 847 520 1060  
Fax +1 847 520 1730  
www.waldmannlighting.com  
waldmann@waldmannlighting.com

**CHINA**

Waldmann Lighting Shanghai Pte. Ltd.  
Part A, No. Five Normative Workshop  
199 Changjian Road, Baoshan  
SHANGHAI, P.R.C. 200949  
CHINA  
Telephone +86 21 5169 1799  
Fax +86 21 3385 0032  
www.waldmann.com  
s.lo@waldmann.com.cn

**SINGAPORE**

Waldmann Lighting Singapore Pte. Ltd.  
168, Jalan Bukit Merah, #04-09B,  
Connection One, Tower 3,  
SINGAPOUR 150168  
SINGAPOUR  
Telephone +65 6275 8300  
Fax +65 6275 8377  
www.waldmann.com  
sales@waldmann.com.sg